



Established 1958

Thermostatic Radiator Steam Traps

Series DBC 2E

Direct Replacement for

Dunham Bush 2E and MEPCO 2E

Operation

Tunstall Corporation produces a complete line of thermostatic radiator steam traps with ratings from 25" HG vacuum to 25 psig. All units are "normally open" to expel air and water and will "close" at saturated steam temperature thereby preventing steam from entering into condensate return lines. Each Tunstall Steam Trap features the Tunstall Capsule[®] which has become the best steam trap replacement element available today.

Features

- Forged brass body, cover, nut and tail piece
- No need to change piping when replacing Dunham Bush 3/4" 2E and MEPCO 3/4" 2E, identical nut, tail piece and rough-in dimensions
- TIG welded stainless steel Tunstall Capsule[®]
- Calibrated, inspected and tested
- Removable and replaceable in-line threaded stainless steel non-corrosive seat

Benefits

- Simple installation
- Corrosion resistant stainless steel internals
- Calibrated Tunstall Capsule[®] for uniform balanced pressure operation
- Energy and fuel savings

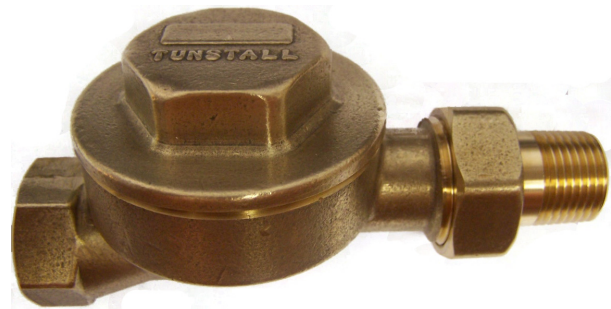
Typical Specification

Furnish and install Tunstall Thermostatic Steam Traps Series DBC as shown or as specified on plans and in accordance with manufacturer's instructions. The trap body and cover shall be forged brass and provided with an entirely stainless steel Tunstall Capsule[®]. Rating shall be _____ lbs/hr at _____ PSIG pressure differential. Each unit shall be guaranteed for 12 months from date of installation.

The Tunstall Capsule[®] professionally upgrades all thermostatic steam traps. Refer to catalog #795 or www.tunstall-inc.com for more detailed information.



TA-3/4-DBC-A



TA-3/4-DBC-S

Applications

- Cast Iron Radiators
- Finned Tube Radiation
- Convectors
- Air Coils
- Sterilizers
- Drips
- Replaces existing Dunham Bush/MEPCO

Tunstall Corporation

118 Exchange Street · Chicopee, MA 01013

© August 2015

We reserve the right to alter designs, specifications and information without notice.



Phone (413) 594-8695 · Fax (413) 598-8109

www.tunstall-inc.com

Bulletin-TA-Series-DBC 2E-0715
Thermal-Disc & Thermostatic Traps

Thermostatic Radiator Steam Traps - Series DBC 2E

Engineering Specifications

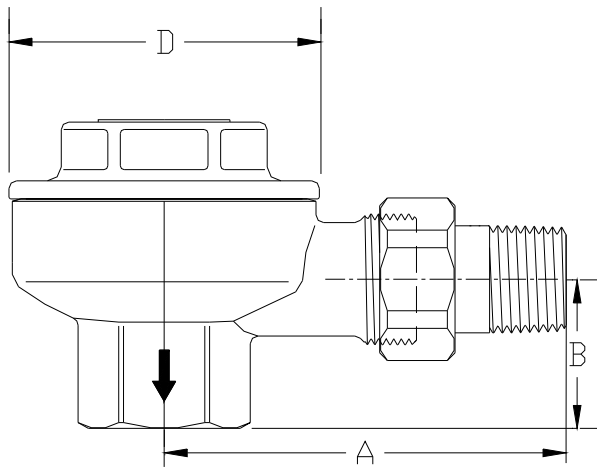
CAPACITIES*

Model	Size NPT	DIFFERENTIAL PRESSURE (PSI)								
		Square Feet EDR**								
		1/4	1/2	1	1-1/2	2	5	10	15	25
TA-3/4-DBC-A	3/4"	152	232	325	400	450	710	1040	1260	2450
TA-3/4-DBC-S	3/4"	152	232	325	400	450	710	1040	1260	2450

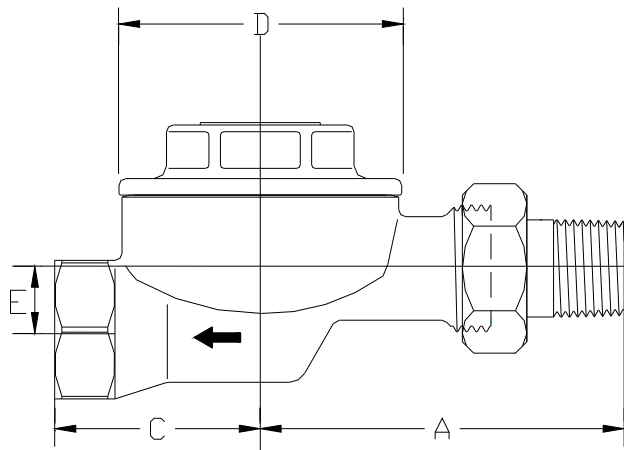
* Ratings are in accordance with standards established by The Steam Heating Equipment Manufacturers Association (SHEMA). No safety factor required.

** To convert Square Feet EDR to pounds of condensate per hour: Divide the square foot ratings by 4.

One Square Foot EDR is equivalent to net emission of 240 BTU per hour with 215°F steam in the radiator surrounded by 70°F air temperature. One pound of condensate is equivalent to approximately 1000 BTU; 1000 BTU is equivalent to approximately 4 square feet EDR.



TA-3/4-DBC-A



TA-3/4-DBC-S

Model No.	Pipe Size	Pattern	A	B	C	D	E	Weight	Capsule
TA-3/4-DBC-A	3/4"	Angle	3-3/16"	1-1/8"	--	3-1/16"	--	1.875 lbs	TFTA-2901
TA-3/4-DBC-S	3/4"	Straight	3-3/16"	--	1-3/4"	3-1/16"	1/2"	1.875 lbs	TFTA-2901

